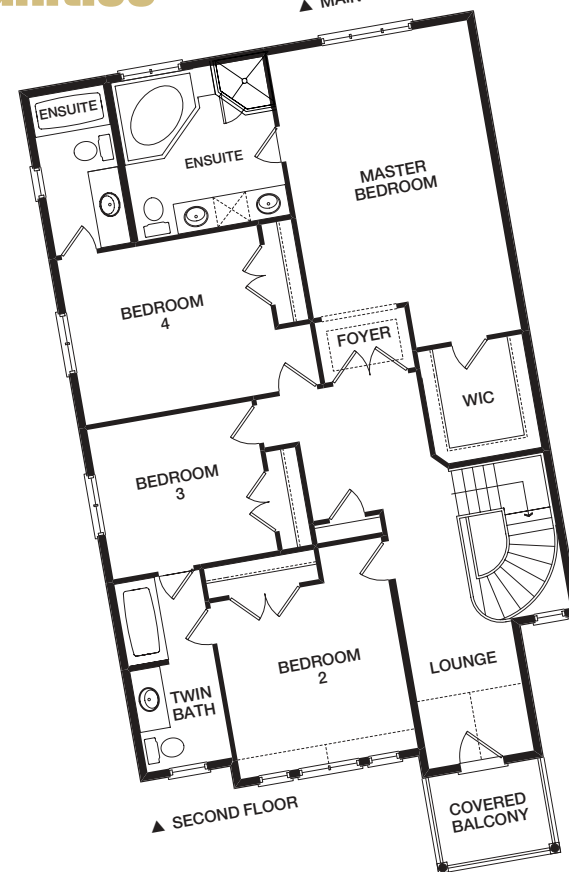
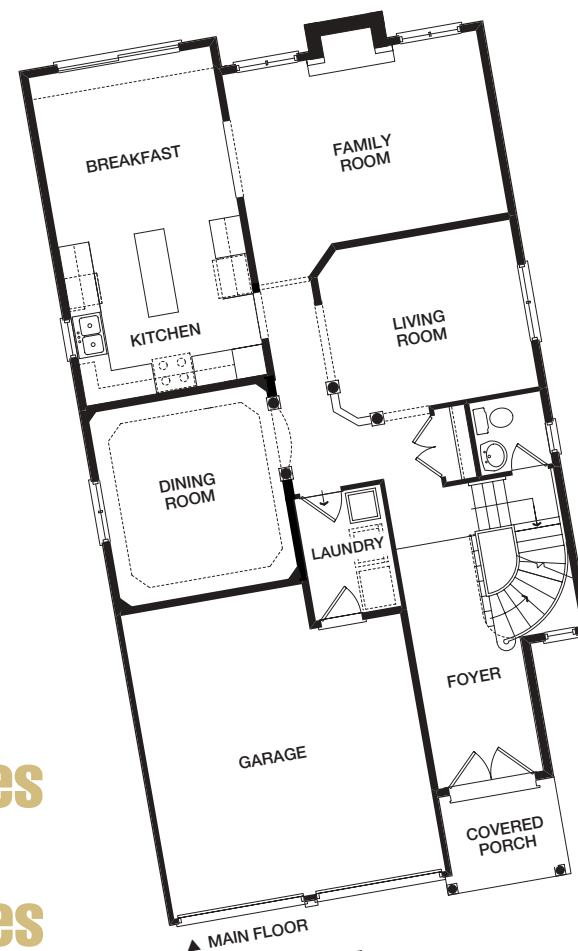


COVER STORY

Brooklin & Georgetown



Charm

Cachet Estate Homes brings it to two winning communities

FAST FACTS

■ **LOCATION:** Olde Winchester in Brooklin and Cachet Hills in Georgetown.

■ **BUILDER:** Cachet Estate Homes

■ **PRICES:** Luxurious townhomes and singles at Olde Winchester are priced from the \$230s. Executive country townhomes and single, detached models at Cachet Hills are priced from the \$260s.

■ **TO SEE FOR YOURSELF:** The Old Winchester Sales Office is located at the northeast corner of Thicksom Rd. and Winchester Rd. (Hwy. 7). For a private preview of Cachet Hills, call 416-702-1781.

■ **HOURS:** Monday to Thursday, 1 p.m. to 8 p.m. and weekends and holidays, 11 a.m. to 6 p.m.

■ **FOR INFORMATION:** visit www.cachethomes.com, www.mygeorgetownhome.com or call 416-482-0077.

THE WINCHESTER Golf Club, as well as excellent shopping and restaurants are just a few of the wonderful amenities that are close by. At Cachet Hills in Georgetown, interested purchasers can register for a preview showing of this exclusive community of only 70 homes. Nestled against a backdrop of lush forested lands with walking paths and beautiful vistas, Cachet Hills is just minutes from the upscale neighbourhood of Glen Williams and its trendy shops and galleries. Residents are also within walking distance of the GO station and one of two golf courses right in the area.

A wonderful mix of executive country townhomes and single, detached models features unique home designs with stunning brick and board and batton-style exteriors. These homes are priced from the \$260s, and include several upgrades, such as strip hardwood flooring in the living/dining area and main floor hallway.

The Somerset model is a spectacular four-bedroom home that features gables, Palladian windows and a second-floor balcony. Thoughtful architectural details, such as the sunken laundry room, coffered ceiling

and half walls with decorative columns add opulence and elegance to the interior. The gourmet kitchen features a large, centre island and a breakfast area with sliding glass doors for a great view to the backyard. The family room showcases a beautiful fireplace that is flanked with two large windows.

Every luxury has been included in the master bedroom, which has a large walk-in closet and private ensuite with an oval corner tub and separate glass enclosed shower. Two bedrooms share a semi-ensuite and the fourth bedroom has its own ensuite. A cosy lounge area, with cathedral ceilings, has French doors that lead to the covered balcony.

In addition to luxurious country living, residents at Cachet Hills and Olde Winchester in Brooklin enjoy several conveniences, including close proximity to major highways for a quick and easy commute. For both locations, Cachet Estate Homes is offering generous bonus packages to give purchasersevenmore value and the opportunity to customize their homes.

— Lisa Fattori
Special to the SUN