



36'
COLLECTION

THE POPLAR

ELEV. A - 2,503 SQ. FT.

ELEV. B - 2,505 SQ. FT.

ELEV. C - 2,504 SQ. FT.

OPT. REC. ROOM ELEV. A, B & C - 647 SQ. FT.



ELEVATION B

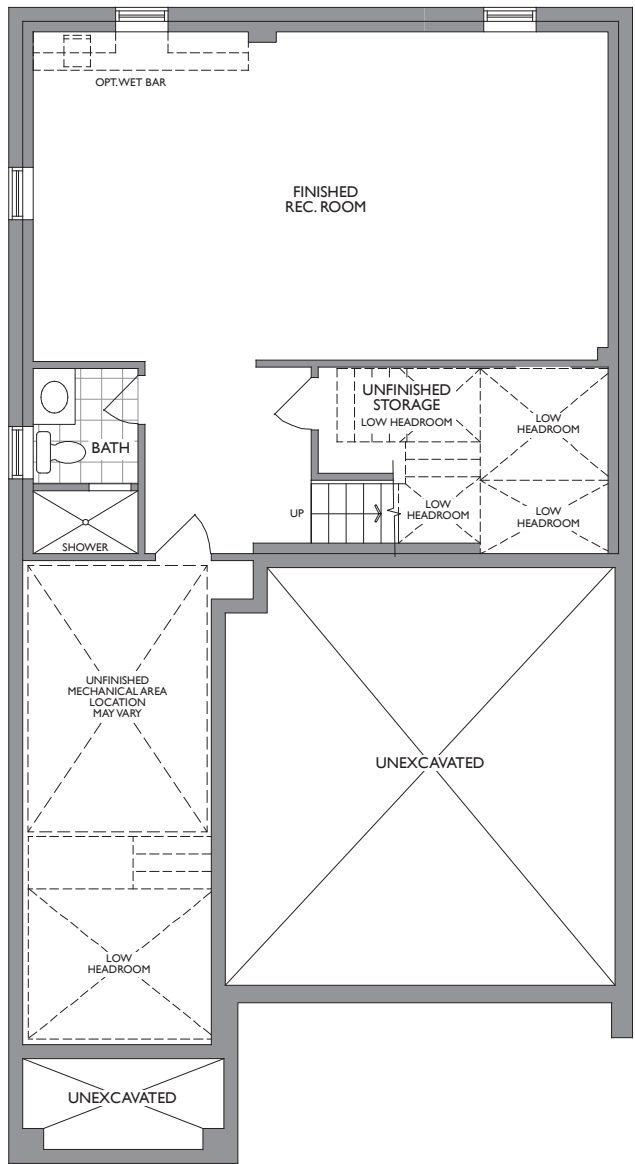


ELEVATION A

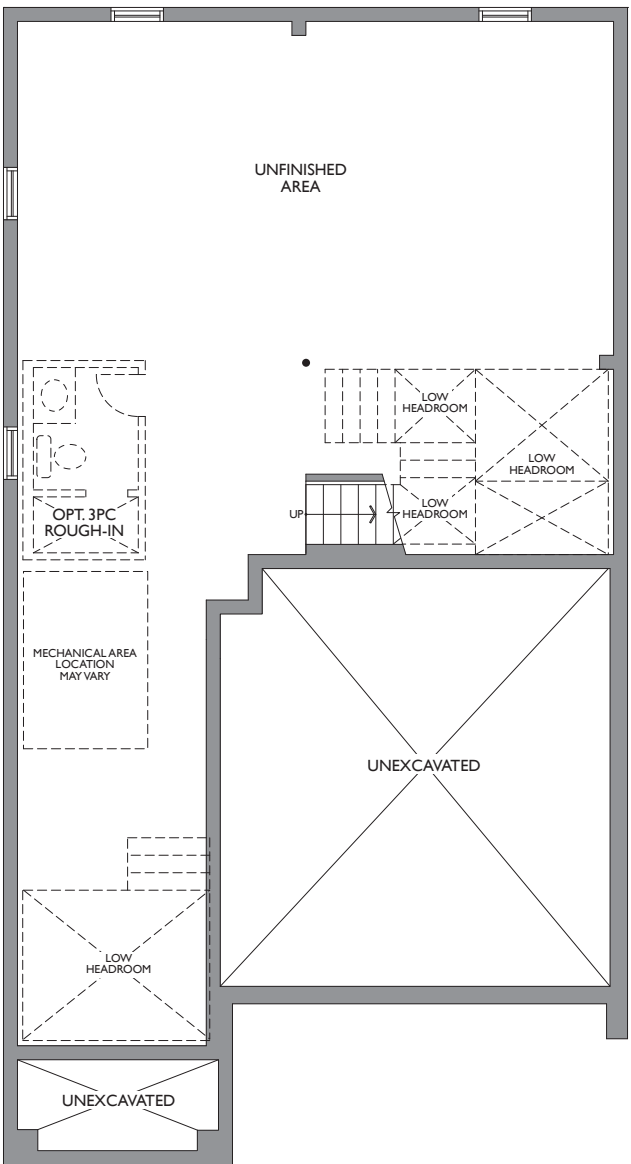


ELEVATION C

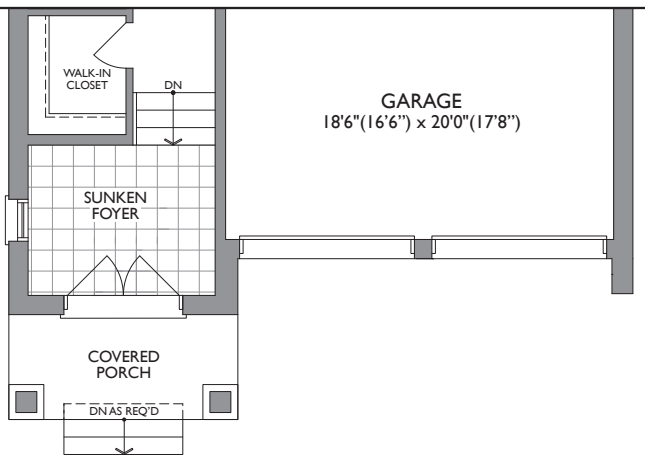
CACHET



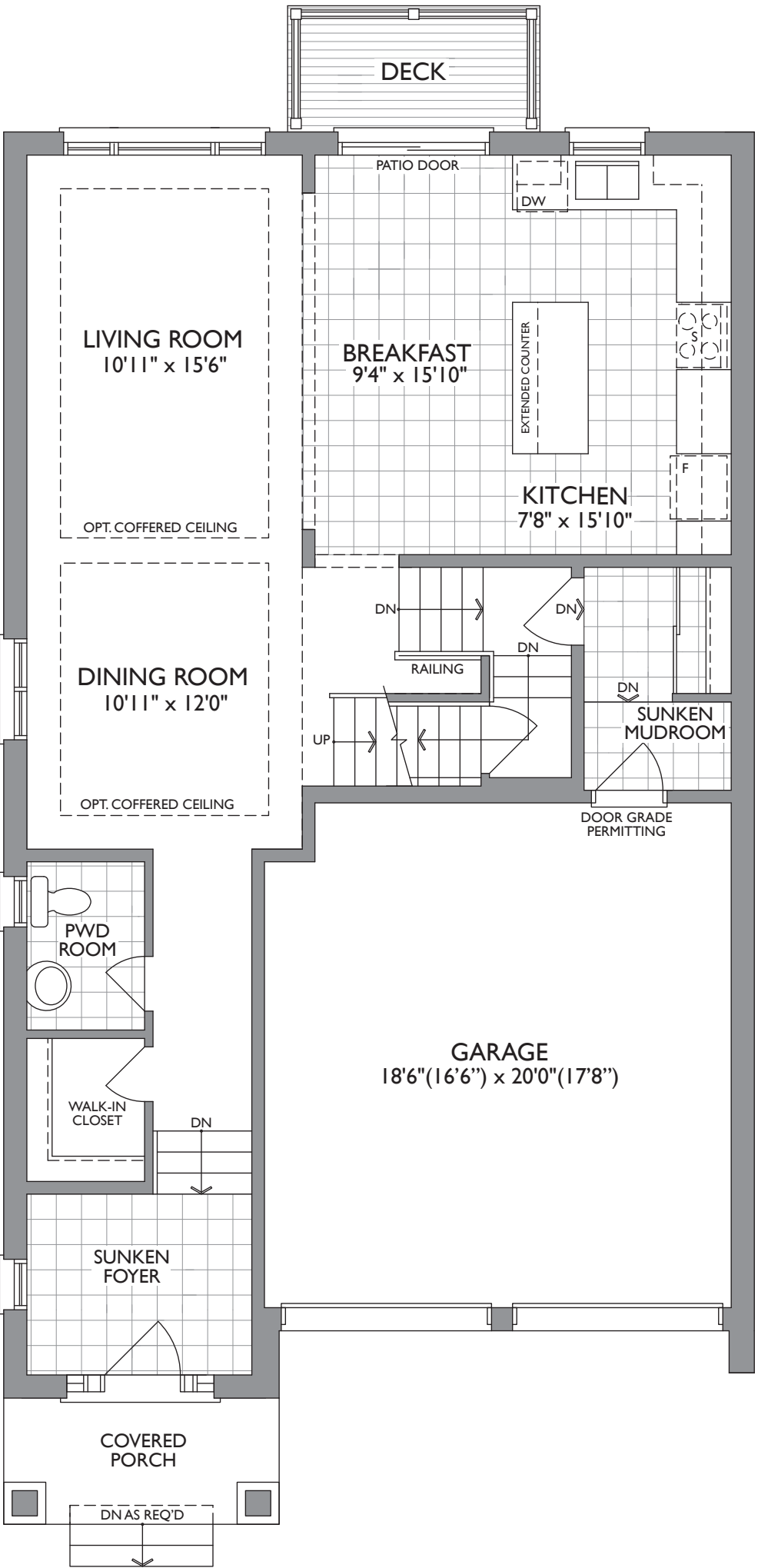
**OPT. LOWER LEVEL
WITH FINISHED REC. ROOM**
ELEV. A, B & C



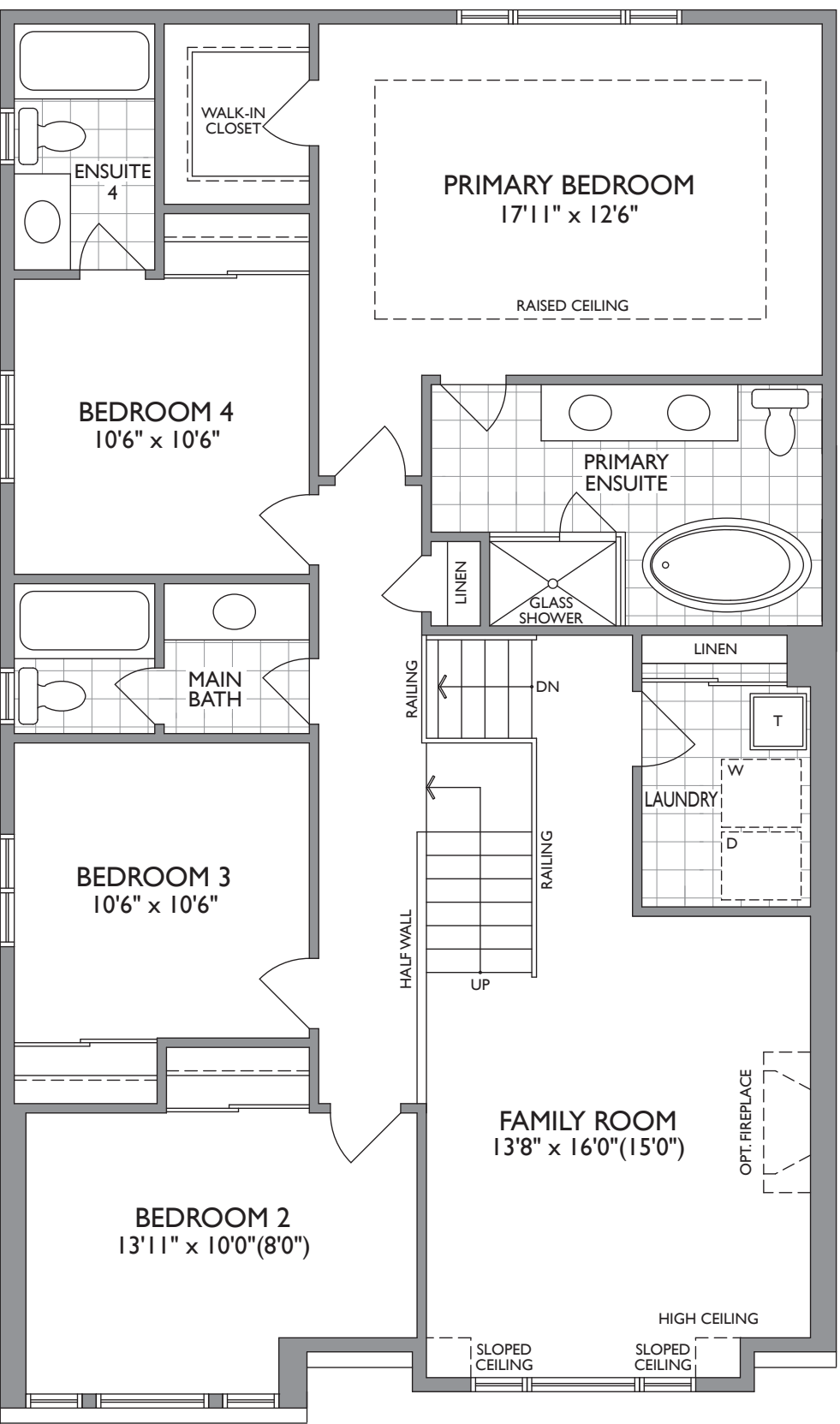
LOWER LEVEL
ELEV. A, B & C



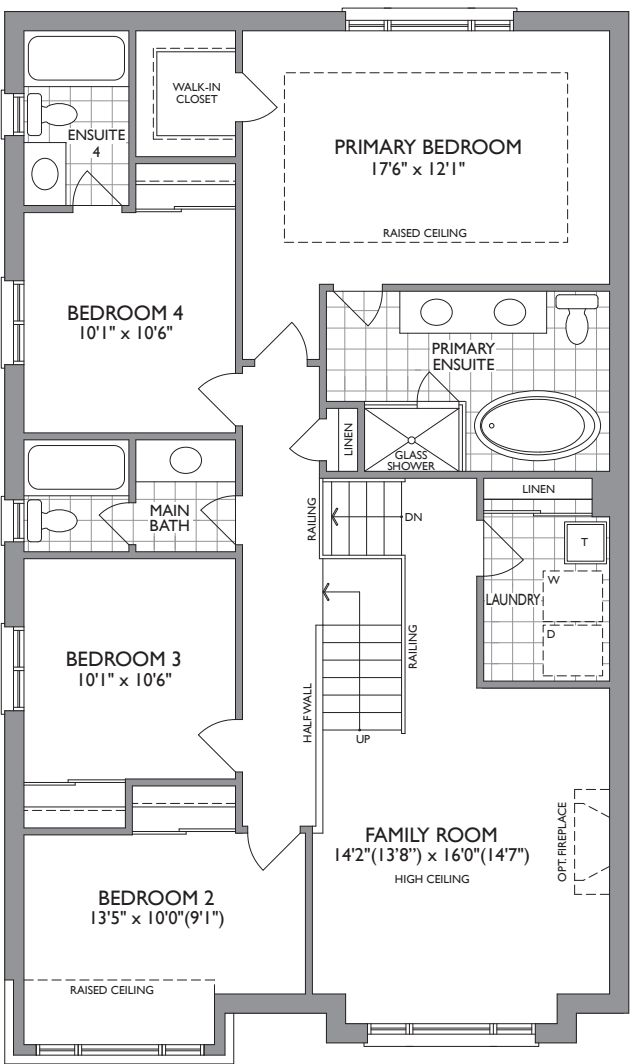
PARTIAL MAIN LEVEL
ELEV. B & C



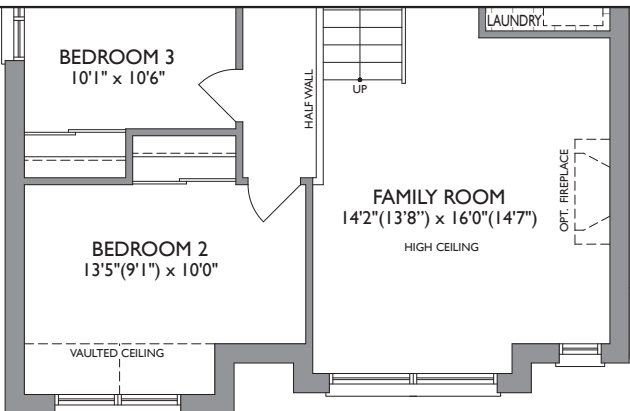
MAIN LEVEL
ELEV. A



UPPER LEVEL
ELEV. A



UPPER LEVEL
ELEV. B



PARTIAL UPPER LEVEL
ELEV. C

36'

COLLECTION

4

3.5

THE POPLAR

ELEV. A – 2,503 SQ. FT. ELEV. B – 2,505 SQ. FT. ELEV. C – 2,504 SQ. FT. OPT. REC. ROOM ELEV. A, B & C – 647 SQ. FT.

Dimensions, specifications, layouts, window sizes, and materials are approximate only, may vary, and are subject to change as provided in the Agreement of Purchase & Sale. All representative square footages include applicable finished lower level and open to below and above areas. Square footage varies according to architectural style. Plans may be reversed. Illustrations are artist's concept. Elevation C partial floor plans apply to Elevation B full floor plan room dimensions. E&O.E. Dec 2024. 3603.

