

ELEVATION A



STINSON
END

LANCASTER

LANCASTER
REVERSED

LANCASTER

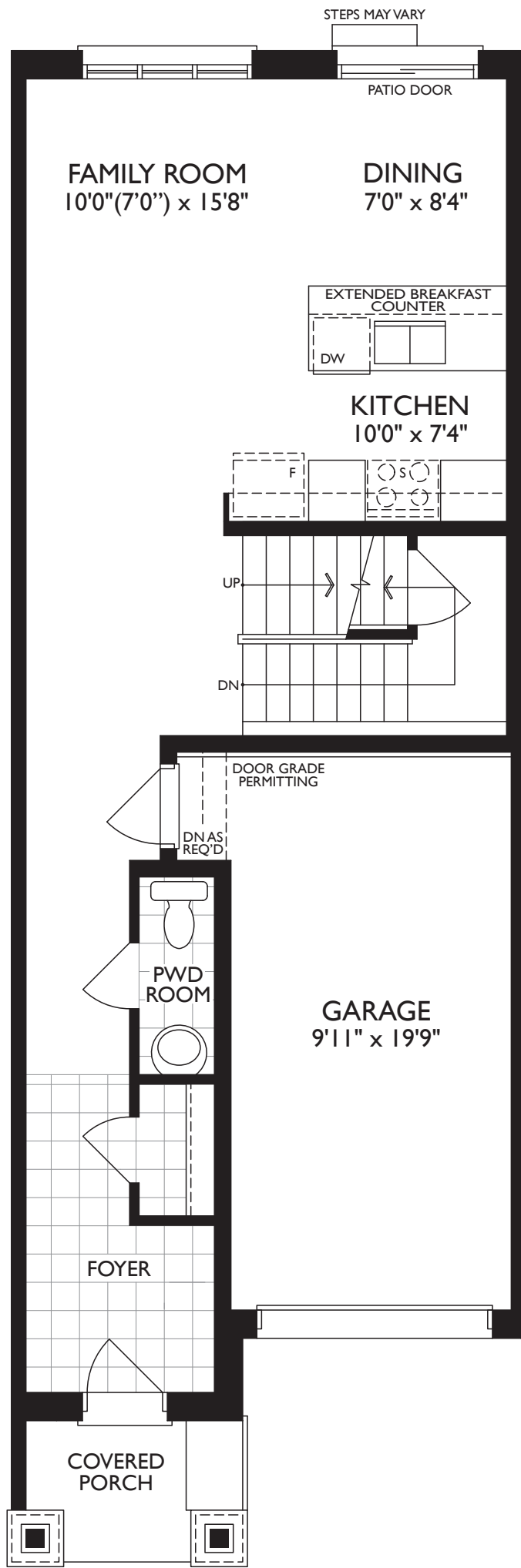
FIREFLY
REVERSED

LANCASTER

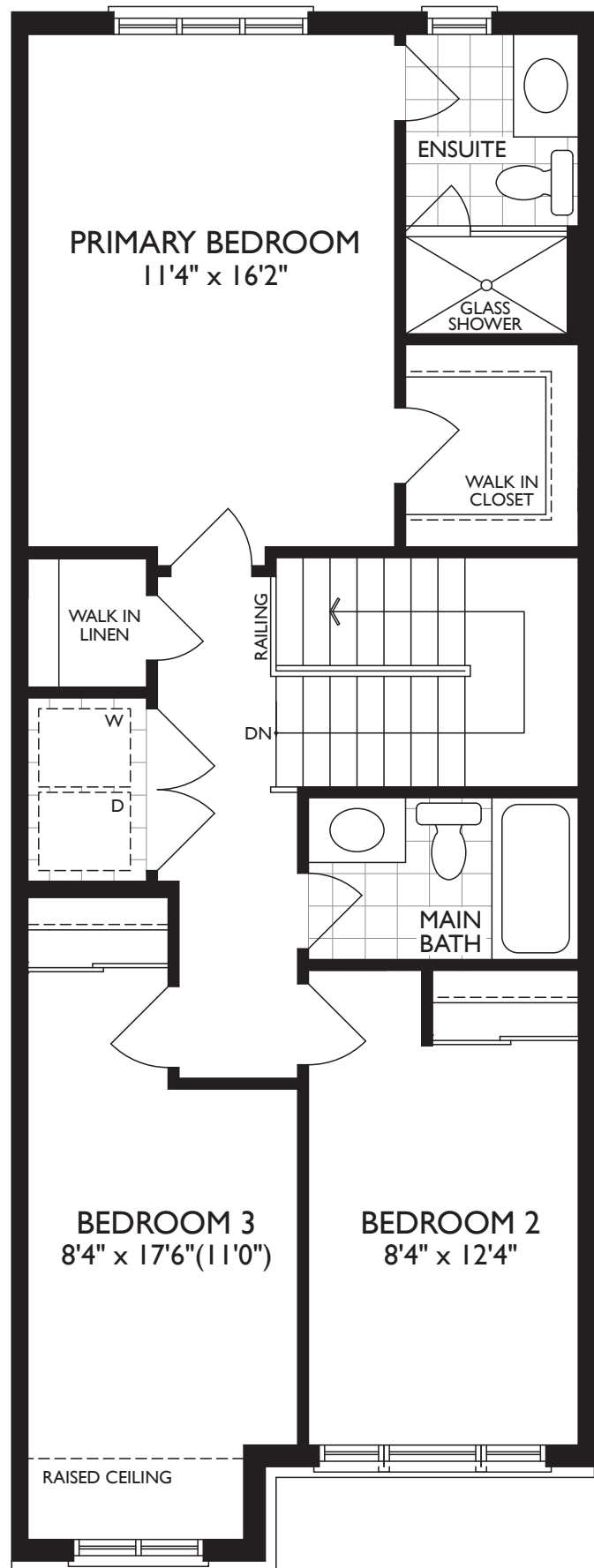
STINSON
END REVERSED

A 1469 SQ.FT.

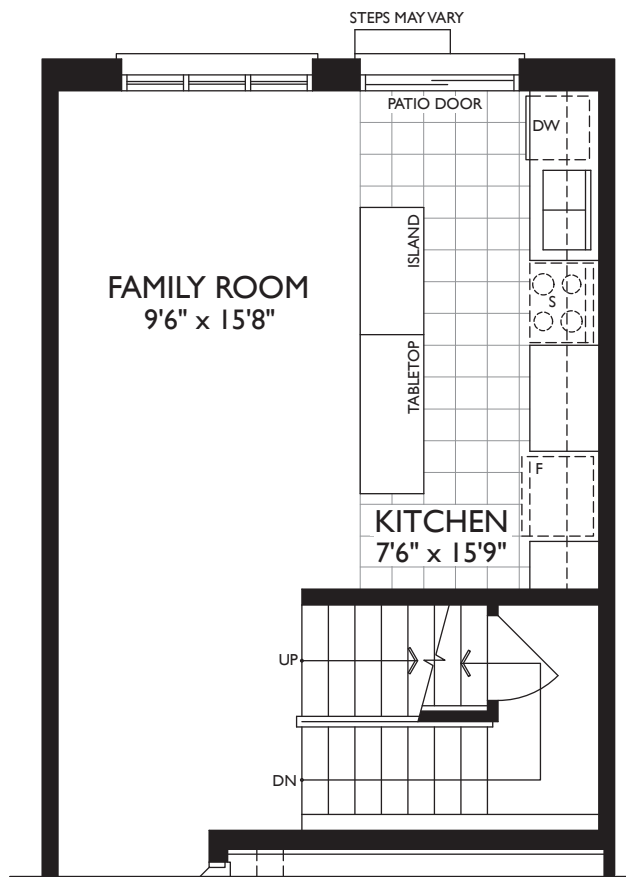




MAIN LEVEL ELEV. A



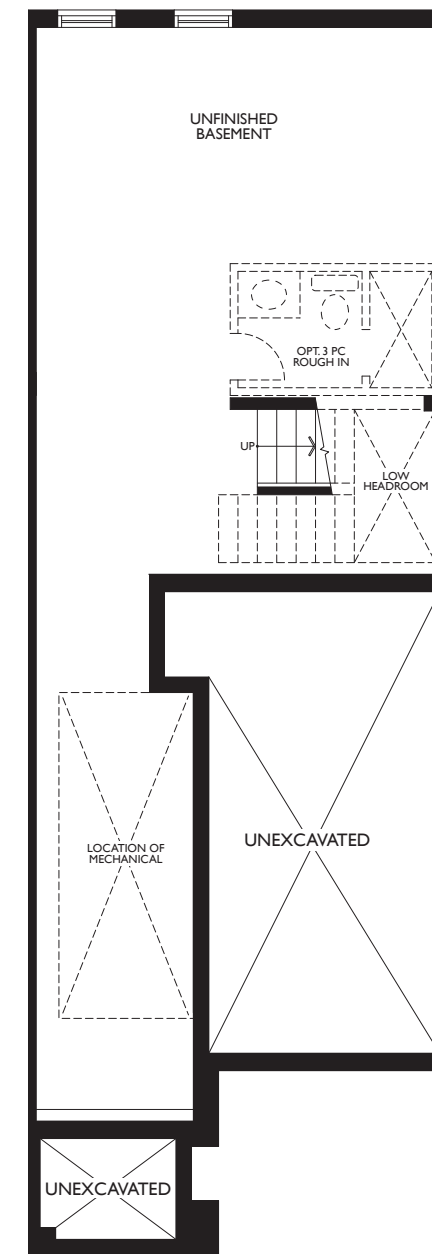
UPPER LEVEL ELEV. A



OPT. KITCHEN
PARTIAL MAIN LEVEL ELEV. A



REAR UPGRADE
PARTIAL UPPER LEVEL ELEV. A



LOWER LEVEL ELEV. A



ELEVATION A



STINSON
END

LANCASTER

LANCASTER
REVERSED

LANCASTER

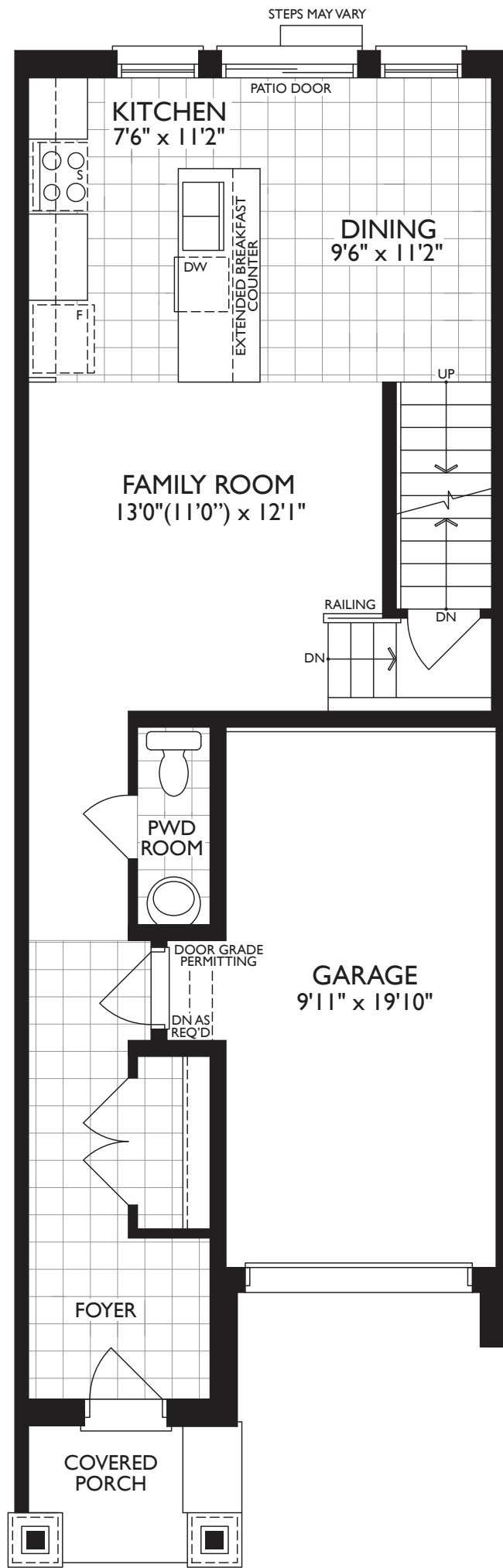
FIREFLY
REVERSED

LANCASTER

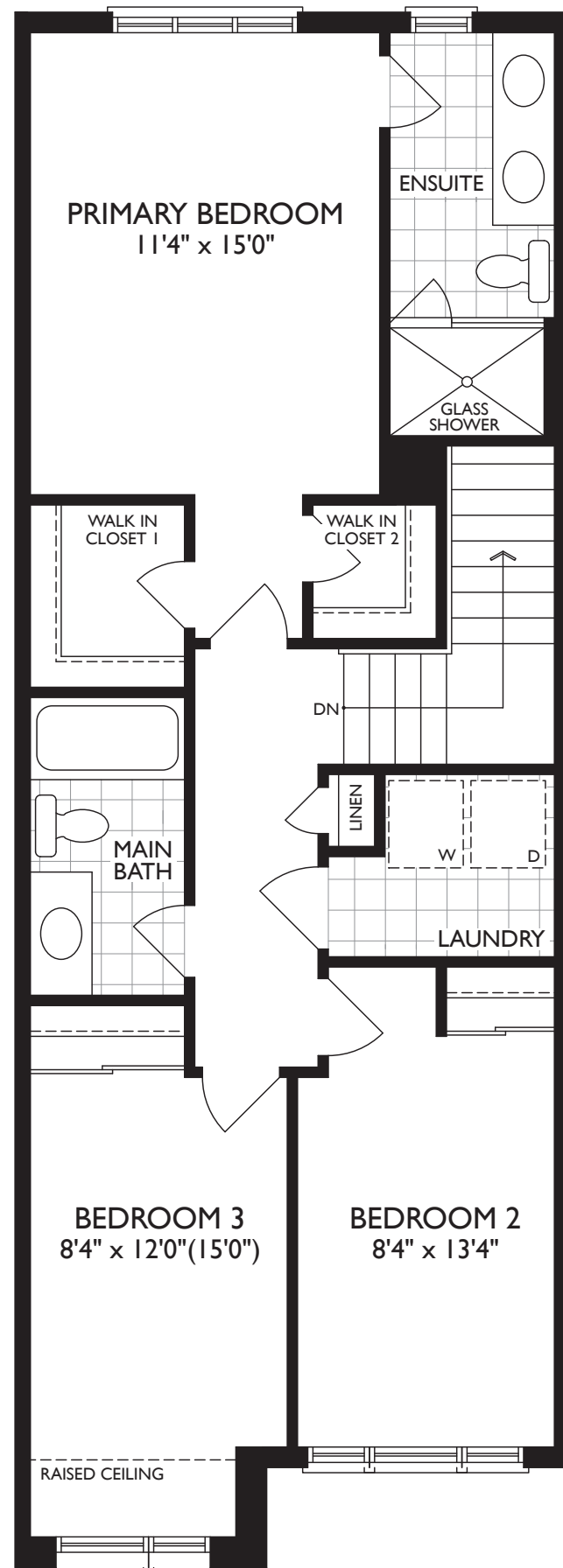
STINSON
END REVERSED

A 1520 SQ.FT.

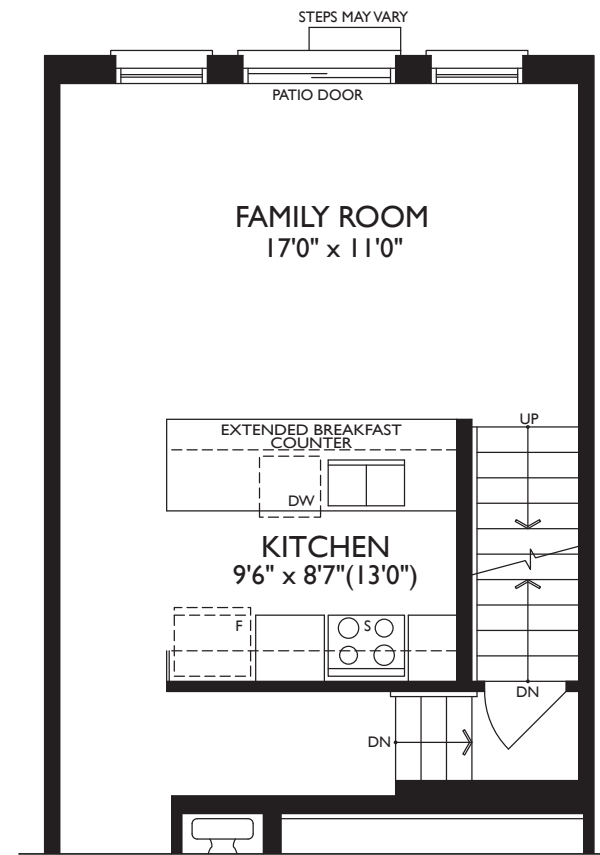




MAIN LEVEL ELEV. A



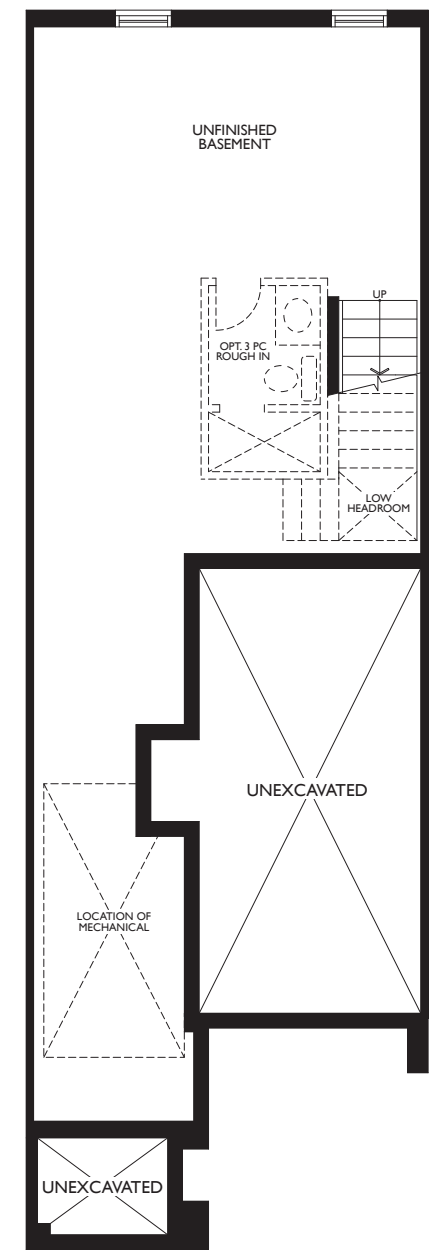
UPPER LEVEL ELEV. A



OPT. KITCHEN PARTIAL MAIN LEVEL ELEV. A



REAR UPGRADE PARTIAL UPPER LEVEL ELEV. A



LOWER LEVEL ELEV. A



Dimensions, specifications, layouts, window sizes, and materials are approximate only, may vary, and are subject to change as provided in the Agreement of Purchase & Sale. All representative square footages include applicable finished lower level and open to below and above areas. Square footage varies according to architectural style. Plans may be reversed. Illustrations are artist's concept. E.&O.E. 09/23

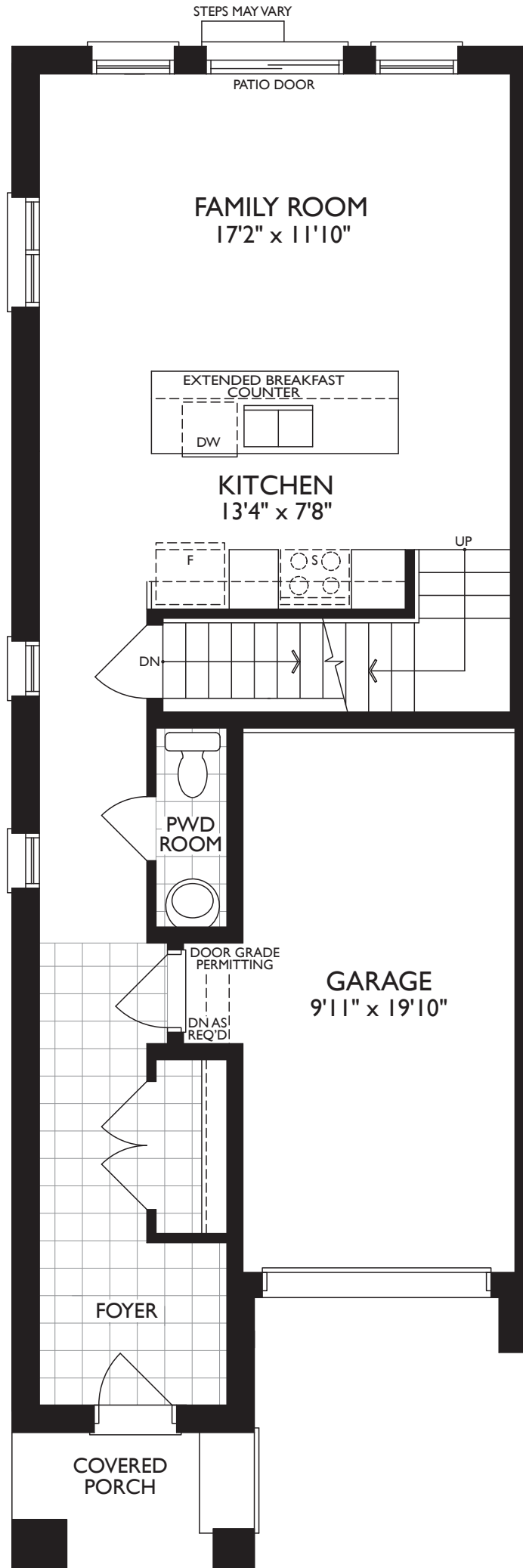
ELEVATION A



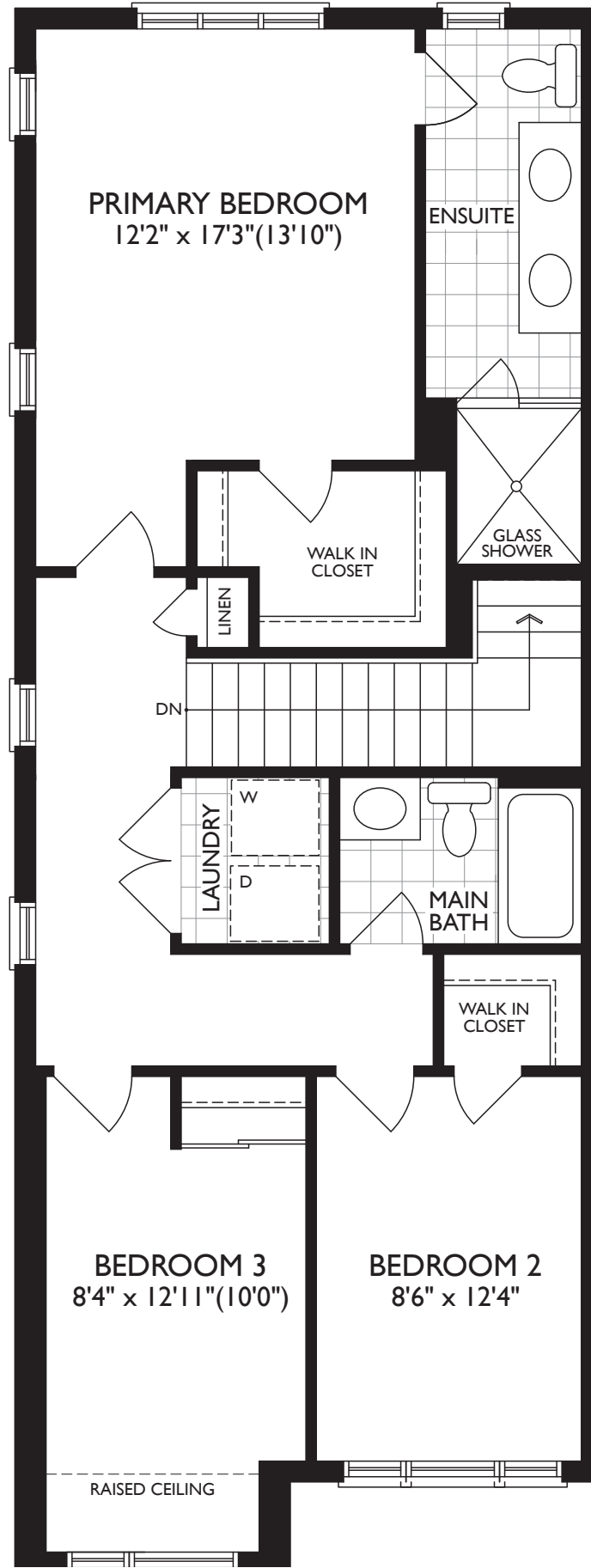
STINSON END	LANCASTER	LANCASTER REVERSED	LANCASTER	FIREFLY REVERSED	LANCASTER	STINSON END REVERSED
----------------	-----------	-----------------------	-----------	---------------------	-----------	-------------------------

A 1588 SQ.FT.

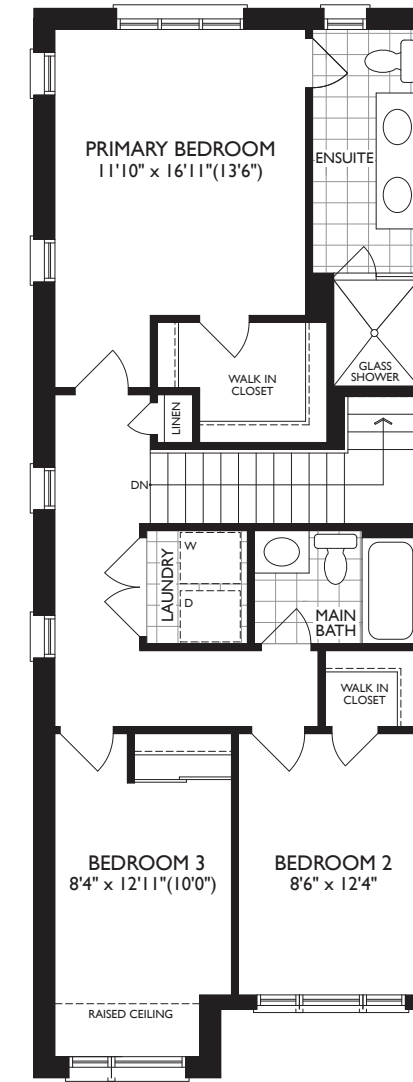




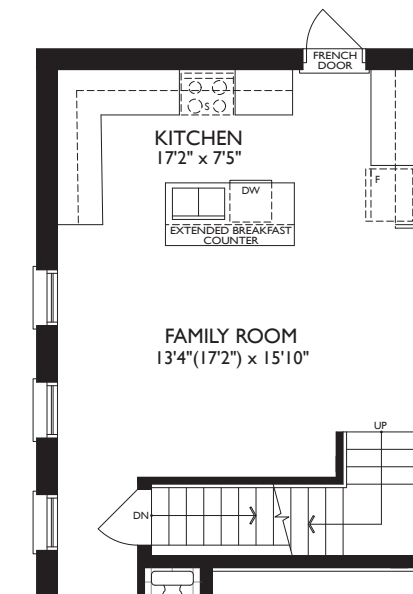
MAIN LEVEL ELEV. A



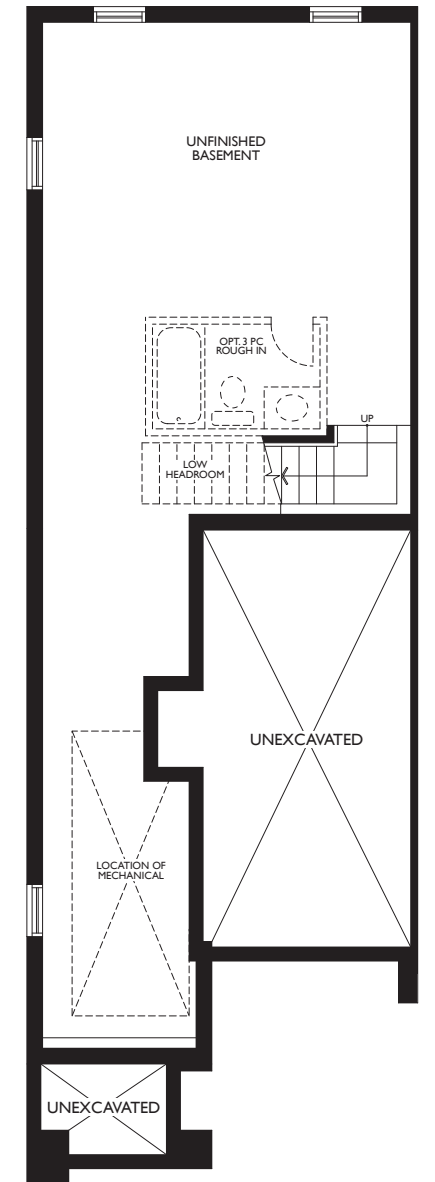
UPPER LEVEL ELEV. A



REAR UPGRADE
UPPER LEVEL ELEV. A



OPT. KITCHEN
PARTIAL MAIN LEVEL ELEV. A



LOWER LEVEL ELEV. A



Dimensions, specifications, layouts, window sizes, and materials are approximate only, may vary, and are subject to change as provided in the Agreement of Purchase & Sale. All representative square footages include applicable finished lower level and open to below and above areas. Square footage varies according to architectural style. Plans may be reversed. Illustrations are artist's concept. E.&O.E. 09/23